



Off the Road Less Travelled Cont'd



Indigenous Community
Paramedicine and Culturally
Appropriate Education Models



J.D. Heffern
Chief Paramedic
Indigenous Services Canada
Government of Canada



Acknowledgment

- Gathered on the traditional territory of the Miccosukee and Seminole tribes

Disclosure/Conflicts

- No Disclosures or conflicts to declare

Nomenclature

Indigenous, Aboriginal, First Nations, First Peoples, Indians, Tribes, Reserves

Moosehide Campaign





Jeffery Gunner
Director and Chief
Paramedic
WAHA Paramedic
Service
James Bay Coast,
Ontario









Nishnawbe-Aski Nations



















shutterstock.com • 583312117



Mali

Uganda

Burundi

Bangladesh

Haiti

Chad

Congo

Yemen

Zambia

Third World Country Traits

- High Poverty Rates
- Economic Instability
- Lack of Basic Human Resources



Mercury
Poisoning
Grassy Narrows
Contamination Increasing!





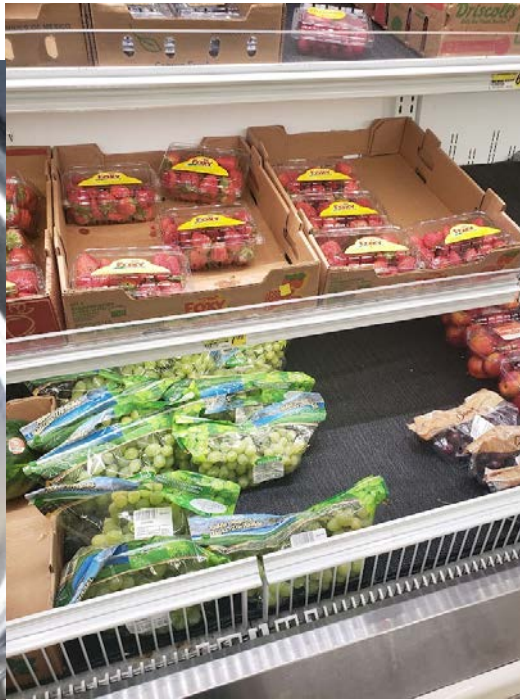






Indigenous Services
Canada

Services aux
Autochtones Canada











- Boil Water Advisories
- Headaches
- Skin Rashes
- Gastro Issues
- Communicable Diseases
- TB
- Chronic Disease
- State of Emergency
- Yearly Evacuations
- Flooding
- Forest Fires

Disproportionate Increase

- Diabetes
- Hypertension
- Substance Abuse
- Mental Health Crisis
- Infant Mortality
- Significant decrease in life expectancy
- Generational Trauma









Paramedic Human Resource Need and Sustainable Solutions





The Community Paramedic





The Remote/Isolated Community Paramedic





Northwestern Ontario



- Kenora
- Fort Frances
- Sioux Lookout (2023)
- 8 Students





- **Moosonee**
- **Moose Factory**
- **Fort Albany**
- **Kashechewan**
- **Attawapiskat**
- **Constance Lake**

N Northern COLLEGE



15 Students
enrolled (2020)

3 Graduated
(2022)

16 Students
(2021)

15 Students
(2022)



Culturally Relevant Education Pedagogy





Traditional Knowledge Keepers





Leveraging Technology

Zoom Meeting

Breakout Room Participants (4)

- JamesBayAccess access@n... (Me)
- Brent
- kaidan reuben
- Moose Factory

Unmute Me Raise Hand Reclaim Host

Chat

From Brent to Everyone:
I think I'm the only one in my group to
gather things lmao
Just missing some Tupperware here

From JamesBayAccess access@north... to Everyone:
U were co host. So I assumed u would
get the ability. Guess not. U are host
now.

From Moose Factory to Everyone:
I'm captain now

From Margaret to Everyone:
sorry didn't mean to click on that

From Roxanne.M to Everyone:
are we allowed to use any tape

From Gee Rose to Everyone:
👌

To: Everyone

Type message here...

3:49 PM
2021-05-11





Zoom Meeting

You are viewing Damien's screen. View Options

Recording...

Participants (12)

Find a participant

Paramedic Mush... (Host, me)

Danien (Co-host)

Heather Moore (Co-host)

Brent

Charlene

conrad

Cory

keidanreuben

margaret

Invite

Mute All

Chat

From Me to Everyone:

Hi everyone!

From Me to Everyone:

That's the passport that I was talking about yesterday

Who can see your messages? Recording On

To: Everyone

Type message here...

CS:Ph case theory semester 2 PDFs

Module 1 Respiratory Emergencies

DESCRIPTION

Introduction to medical Respiratory emergencies as well as its treatment and management according to SLS and A&S manuals.

Upon completing this module, the student should be able to:

- Explain and perform non-pharmacological and pharmacological treatment for patient suffering from respiratory emergencies (should be able to explain treatment to patient under patient management standards)
- Explain the pathophysiology related to respiratory emergencies as well as possible complications
- Understand basics of treatment provided outside of prehospital care for different respiratory pathology and how it may affect treatment
- Compare therapy standards (generally CC therapy for COPD patients)

Module 2 Neurological emergencies

DESCRIPTION

Introduction to neurological emergencies

Upon completing this module, the student should be able to:

- Identify and manage neurological emergencies and symptoms
- Review the BLS stroke brain protocol
- Complete full neurovascular assessment with medical focus
- Explain the basics of treatment provided outside of prehospital care and understand how these could impact patient care

Unmute

Start Video

Security

Participants

Pods

Chat

Share Screen

Pause/Stop Recording

Breakout Rooms

Reactions

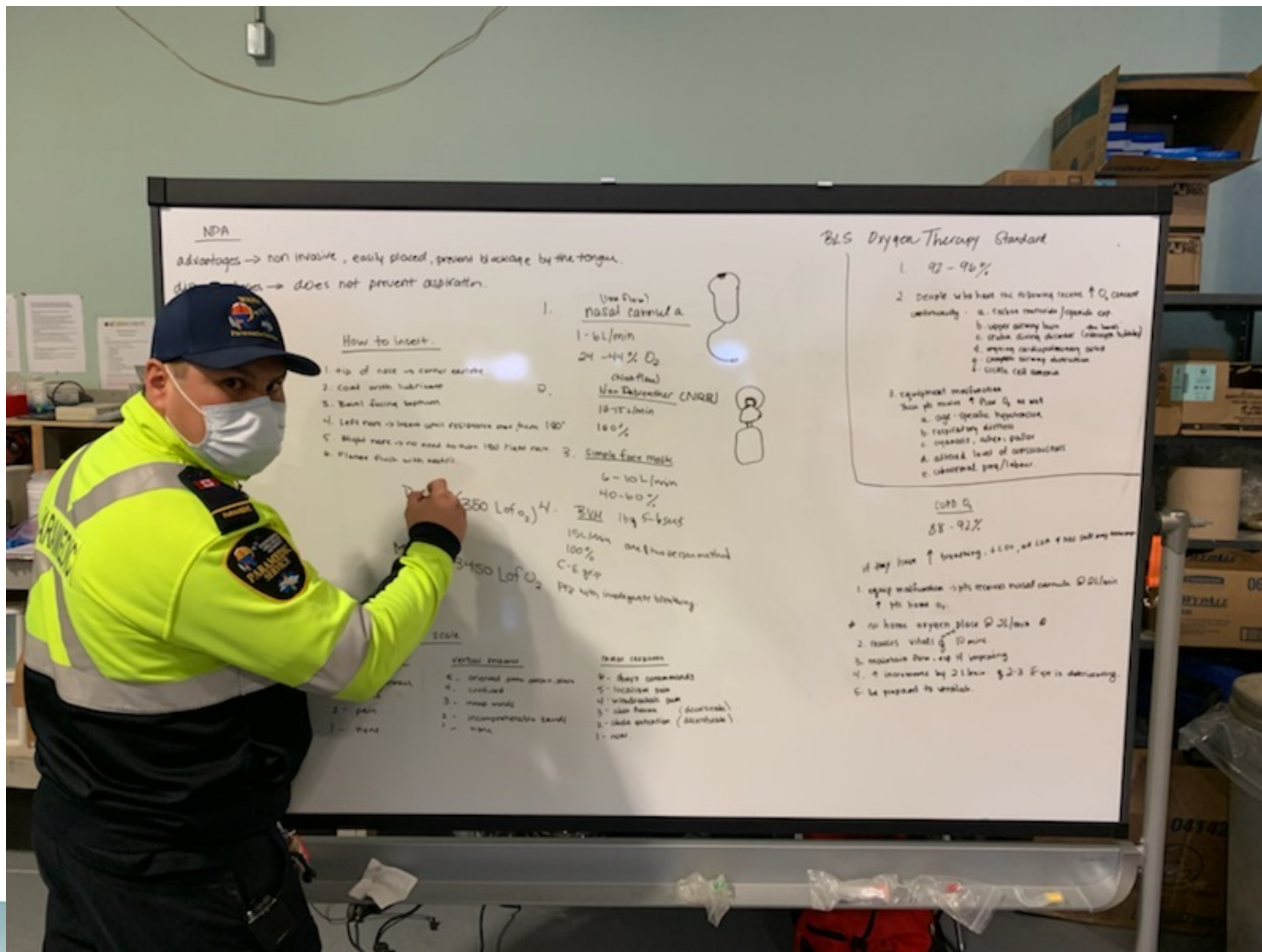
More

End

Type here to search

3:12 PM
2021-06-08

Paramedic Coaches and Mentors











Truth and Reconciliation Commission

- **Health** leaders in organizational governance have a key role in enacting the **Truth and Reconciliation Commission's Calls to Action**. This discussion highlights historical and contemporary truths that can underpin action for addressing colonial impacts on Indigenous (First Nations, Metis, and Inuit) **health** outcomes and **healthcare**.





Meegwetch!
Thank You!



Question or Comments?

J.D. Heffern *AEMCA, ACP, BSc, MBA(c)*

**Chief Paramedic
Indigenous Services Canada
First Nation Inuit Health Branch**

jd.heffern@canada.ca

613-281-0597

@jdheffern



*Cooperation. Coordination. Communication.
Collaboration*

