

COMMUNITY PARAMEDICINE:

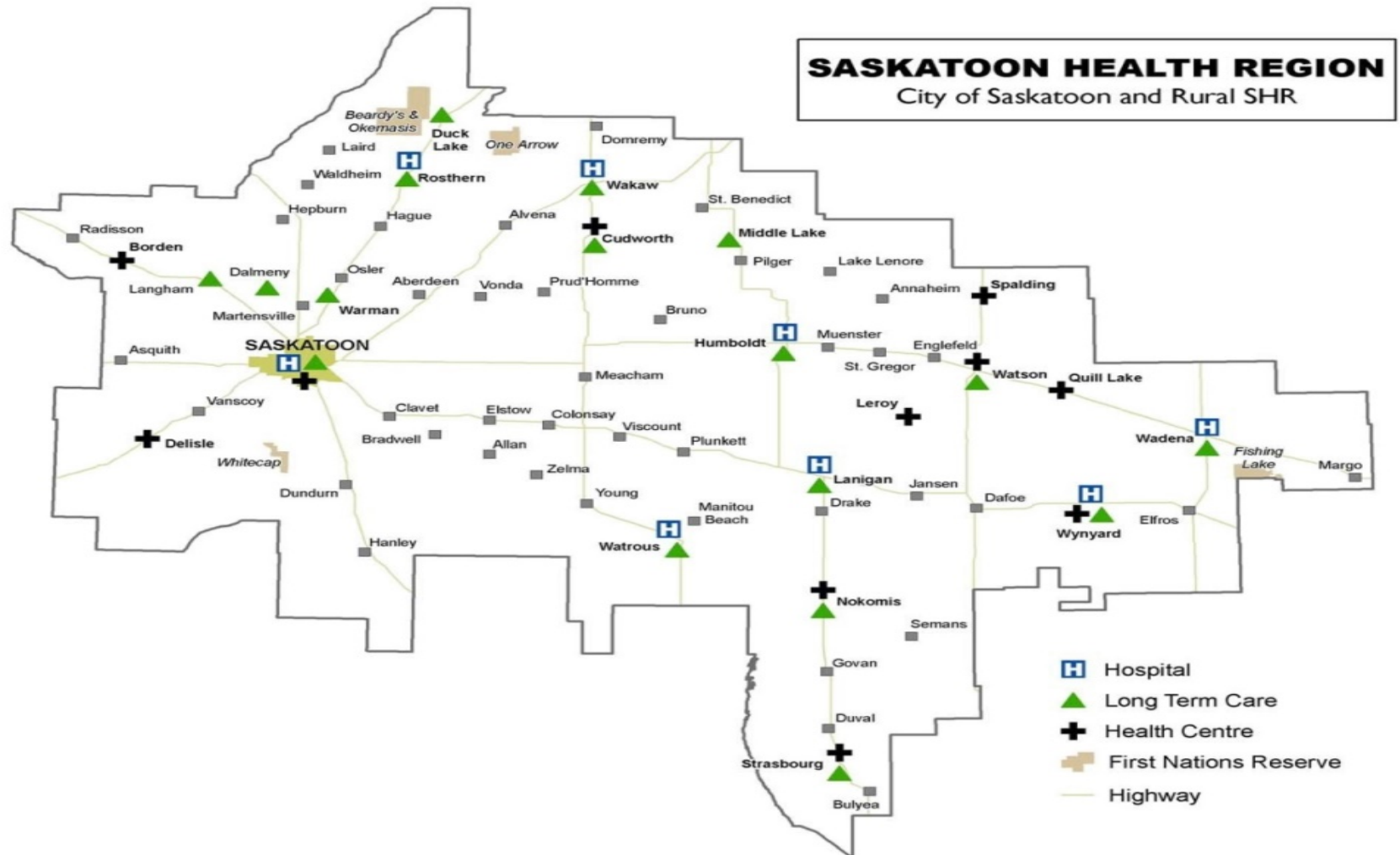
EXPANDING INTERDISCIPLINARY TEAM MODELS TO ENHANCE CLIENT CARE IN RURAL SETTINGS

Kelly Tokarchuk
Home Care Manager

Kelly Prime
ACP, Paramedic Chief

Sherri Julé
Manager, Pre-hospital Emergency
Medical Services

Community Care in the Rural Setting – Challenges and Thinking Out of the Box

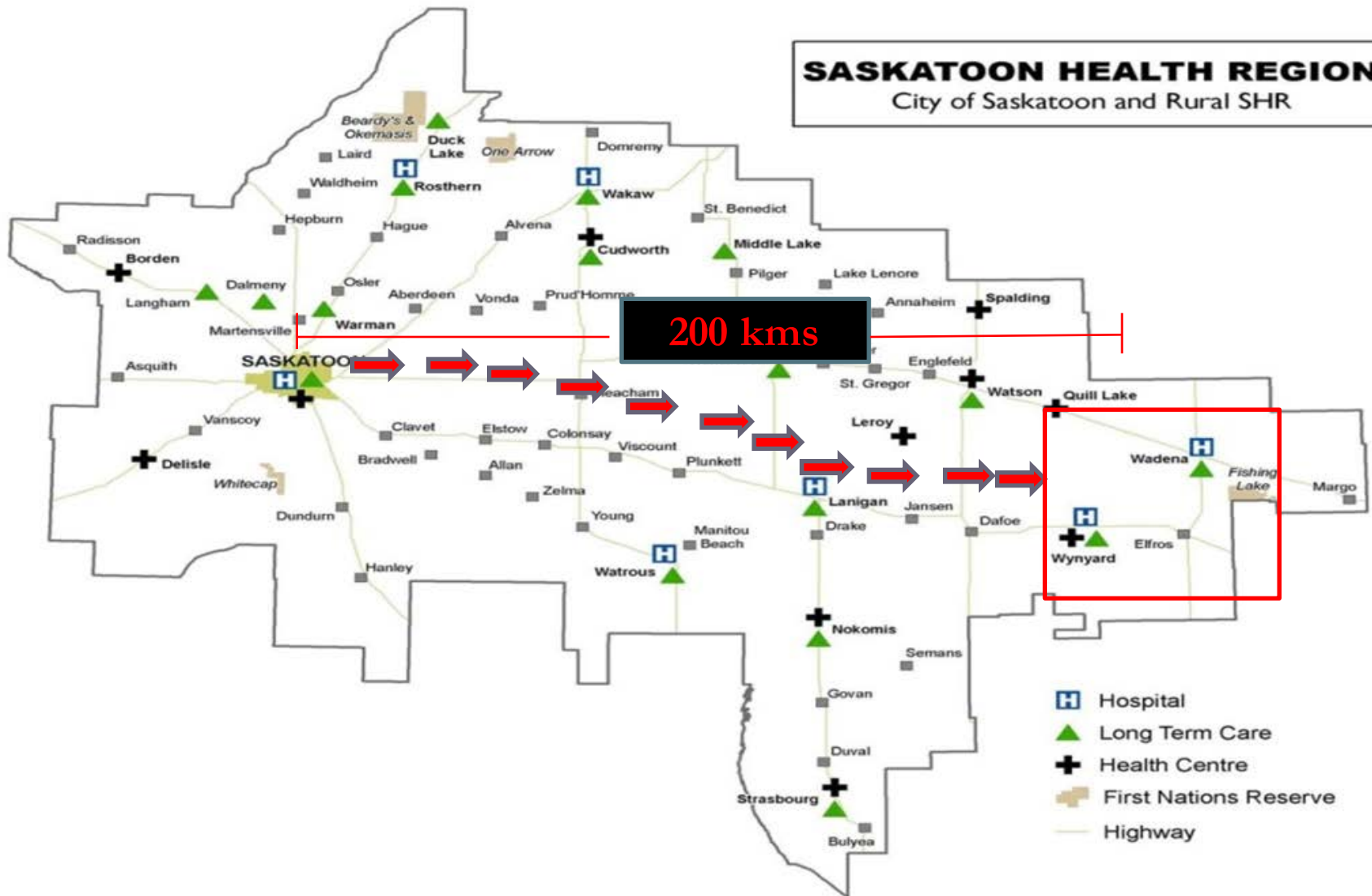


Community Care in the Rural Setting – Challenges and Thinking Out of the Box



SASKATOON HEALTH REGION

City of Saskatoon and Rural SHR



Rural Community Care Objectives

⦿ Challenges

- Staffing Levels
- Access To Resources

⦿ Collaborations

- Community Paramedicine
- OT/PT
- Facility

Community Paramedicine

Background

- “The future of EMS in Canada is providing mobile primary health care as defined by the needs of each community” The EMS Chiefs of Canada
- Focus on community prevention & wellness
- Enables EMS professionals to work at their full scope of practice
- Collaborative work with healthcare professionals & community leaders to assist in the delivery of care in a variety of services

Community Paramedicine

Paramedic Roles

- The traditional role of Paramedics has expanded into the communities they serve, some of the additional initiatives that they are involved in are:
 - Vital Signs / Glucose Testing
 - Assessment / follow-up
 - Transfers
 - Assessments
 - IV Hydration
 - IV Antibiotics
 - Phlebotomy
 - Enhancement of Support in Acute Care
 - Fall Prevention
 - Medication Assist / Pain Management
 - Influenza Immunization

Community Paramedicine

Midway Ambulance Care - Wynyard

- ⦿ One primary ambulance for emergency calls and interfacility transports.
 - one secondary ambulance as a mechanical back up
- ⦿ Three full-time Primary Care Paramedics (PCP)
- ⦿ One full-time Intermediate Care Paramedic (ICP)
- ⦿ One Advanced Care Paramedic (ACP) works in a Rover vehicle in order to respond to critical and community care needs
- ⦿ Two casual PCPs and one casual ACP are available





Challenges

⦿ Staffing Levels

- In this town we have 7 CCAs with positions and casual staff to cover approx. Care with Adolf = 44 hours per week.
- Recruiting
 - Difficulty with recruitment and retention

⦿ Access to Resources

- OT/PT

Collaborating for Developing Solutions

◎ Community Paramedicine

- Full Scope of Practice Paramedics
- Relationship with Home Care
- Relationship with the Family

◎ OT/PT

- Team approach for reassessing care needs of client.
- Assessment of equipment and care planning

Adolf

```
graph BT; HC[Home Care] --> Adolf[Adolf]; P[Paramedics] --> Adolf; OTPT[OT/PT] --> Adolf; F[Family] --> Adolf;
```

Home Care

- TLR Concerns
- Resource Limits
- HC view of care
- Physician

Paramedics

- Paramedic approach to care
- Care concerns for client

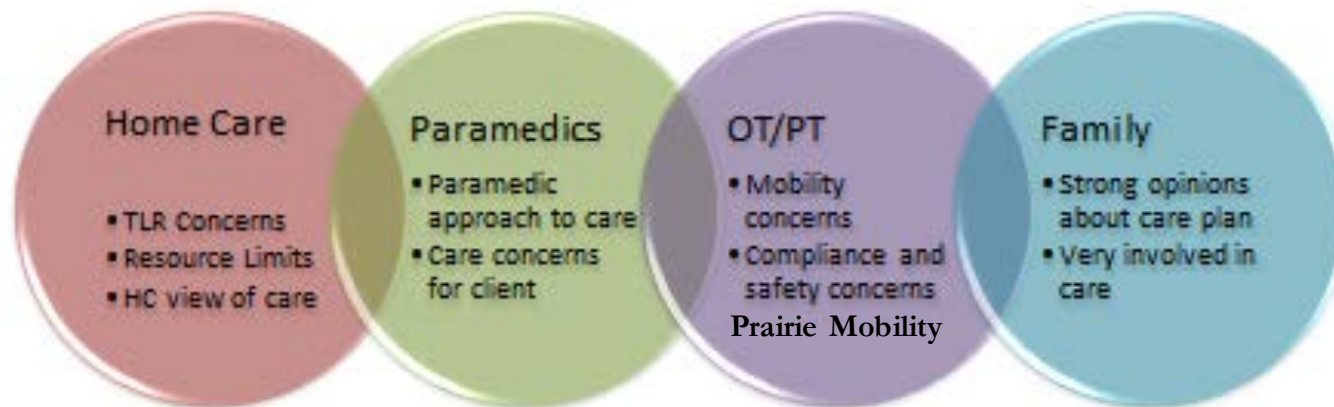
OT/PT

- Mobility concerns
- Compliance and safety concerns

Family

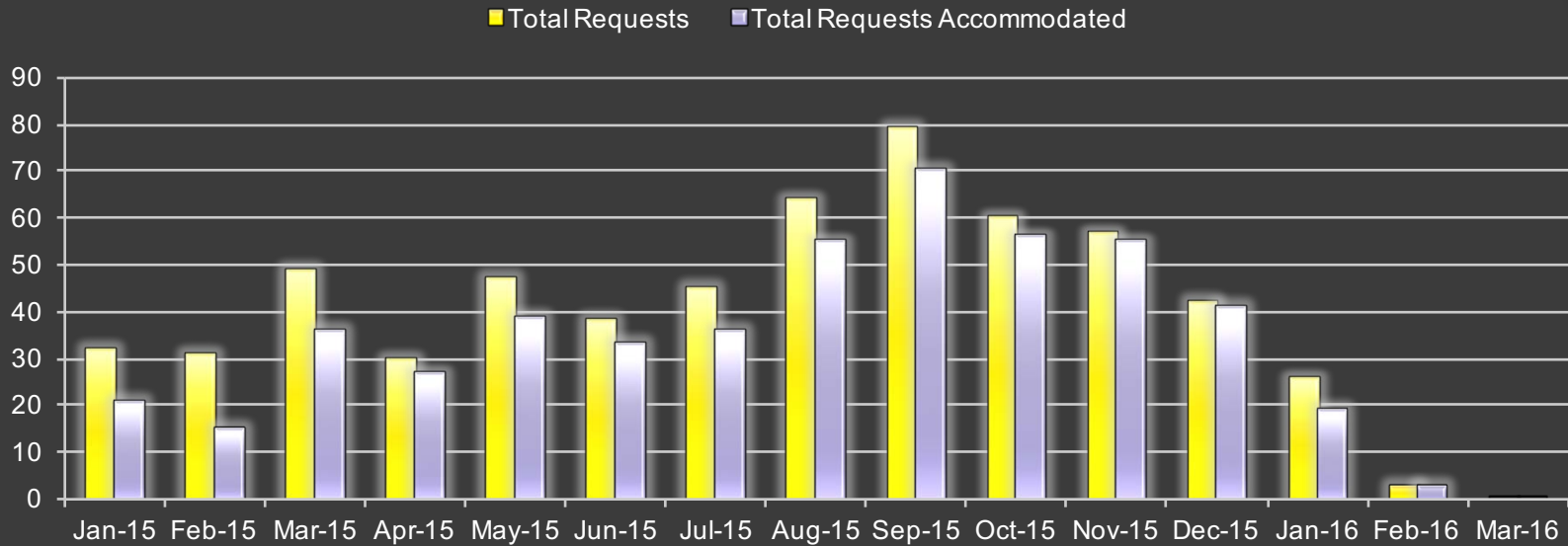
- Strong opinions about care plan
- Very involved in care

Adolf

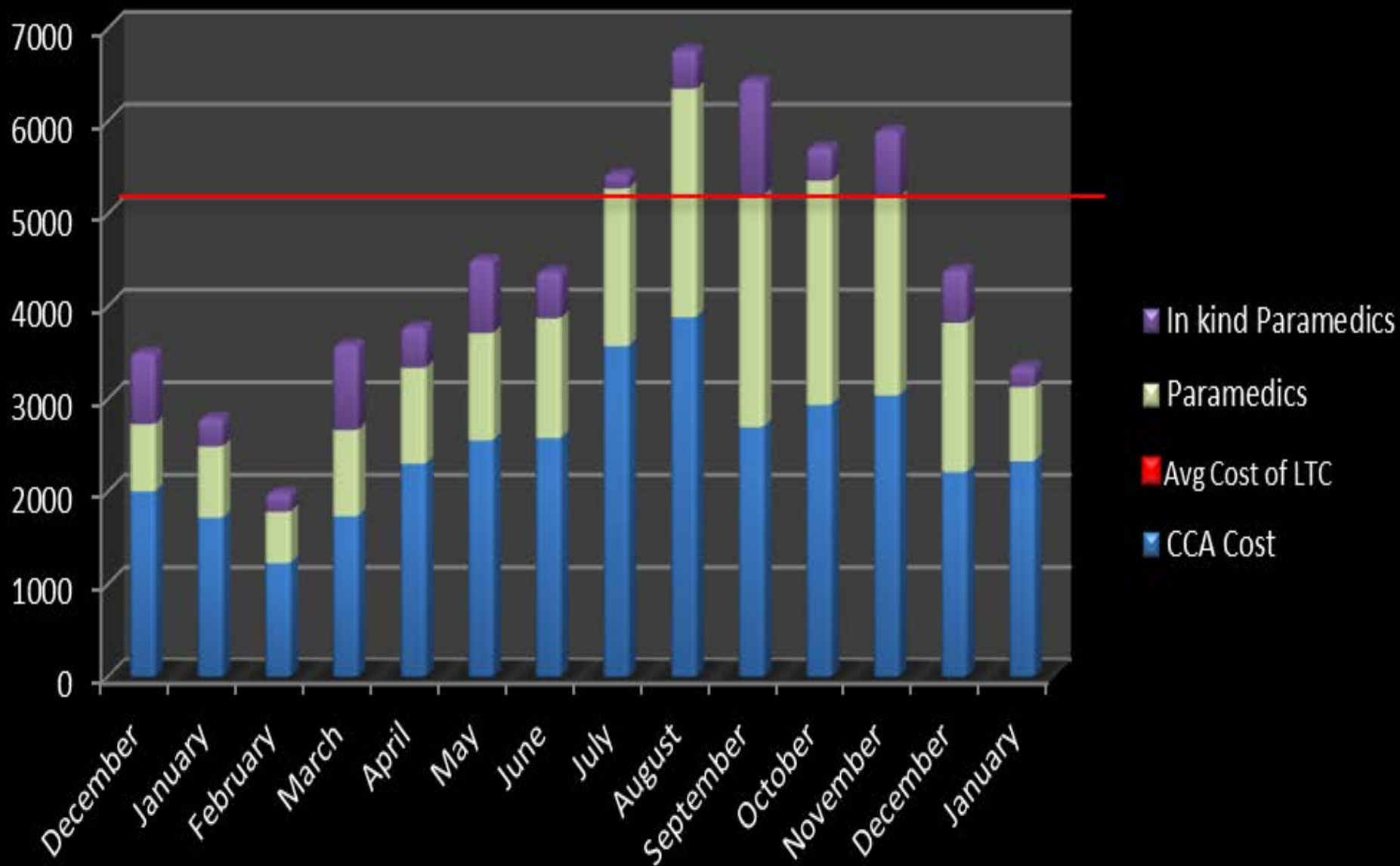


Community Paramedics

Midway Ambulance Care Ltd. Community Paramedicine Lift Assist Home Care Project



Cost of Care

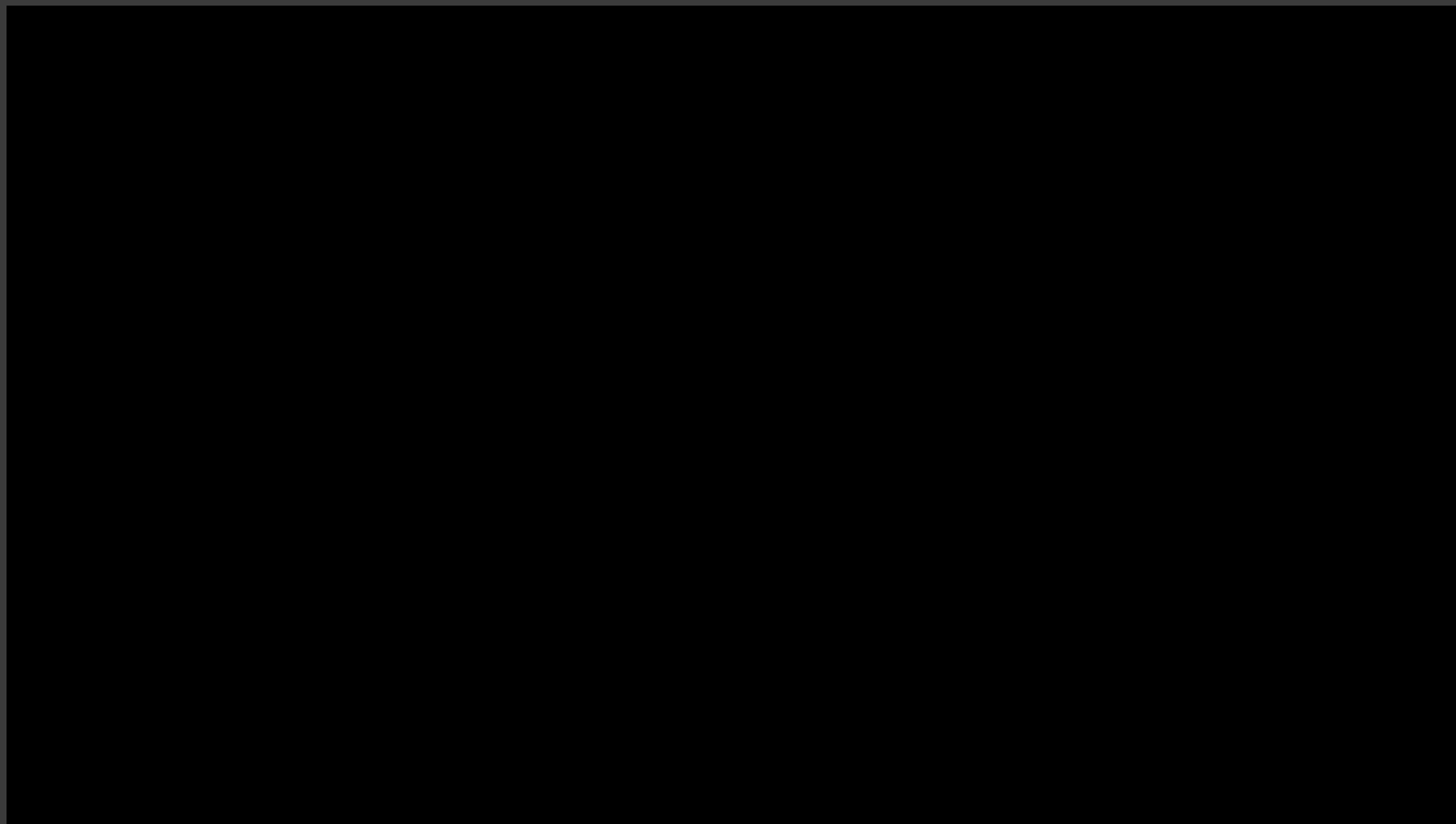


Present/Future Collaborations

- ⦿ Community Paramedicine
 - Palliative Care
 - Home IV programming
 - Community Phlebotomy
 - Post Discharge from Hospital Assessments
 - Medication Assists
 - Fall Prevention
 - Wellness Clinic

Learnings/Next Steps

- ⦿ Do not let the perceived lack of resources prevent you from providing services
- ⦿ Embrace extending the circle of care to nontraditional care providers.
- ⦿ Continued team building between Home Care and Paramedics
 - Post Collaboration Survey
- ⦿ “The only thing a person cannot do is bite their own ear”-Margaret





In Loving Memory of Adolf

1928-2016